



DAMEN STAN PONTOON® 4113

"RHUMB 4113"

GENERAL

YARD NUMBER	523703
DATE OF DELIVERY	Mid-September 2012
TYPICAL APPLICATIONS	Deck Cargo, RoRo Cargo
TYPICAL AREA OF OPERATION	Deep sea, Coastal waters, Harbours, Inland waters
CLASSIFICATION	Lloyd's Register + 100 AT Pontoon IWS for non-propelled and unmanned vessels
FLAG	Australia
OWNER	Rhumb 4113 Pty. Ltd.

DIMENSIONS

LENGTH MOULDED	41,40 m
BEAM MOULDED	13,00 m
DEPTH MOULDED	3,00 m
DRAUGHT MAX	2,50 m
DEADWEIGHT	962 ton

CAPACITIES

DECK LOAD	15 ton/m ²
BALLAST TANKS	10 pcs.
DECK THICKNESS	12 mm

BALLAST SYSTEM

FILLING/EMPTYING	By means of an external pump through the manholes on deck
SOUNDING	By means of opening of the flush manholes

DESIGN CONDITIONS

SEAWATER TEMPERATURE	0° to +35° C
OUTSIDE AIR TEMPERATURE	-5° to +45° C

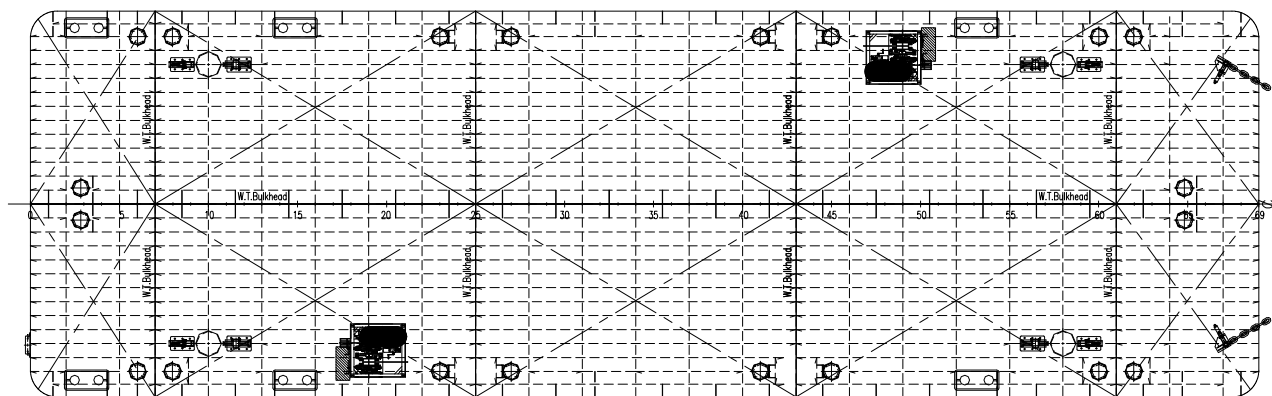
EQUIPMENT

TOWING BRACKETS	One on PS and one on SB at fore deck
BOLLARDS	4 double bollards
DRAUGHT MARKS	At fore, midship and aft on PS and SB every 20 cm
BOARDING LADDERS	2 on SB and 2 on PS in recesses of the hull
CATHODIC PROTECTION	Zinc anodes on underwater part of the hull
MANHOLES	Flush manholes
ANTI SLIP	Anti-slip painting all around at sides, rear and peak
ANTI-FOULING	Anti-fouling paint system
SPUD POLES	4 spud poles: $\varnothing = 0,61$ m; L = 20 m
WINCHES	2 diesel driven double drum winches
TYRE FENDERS	26 tyre fenders

TOP VIEW

PS

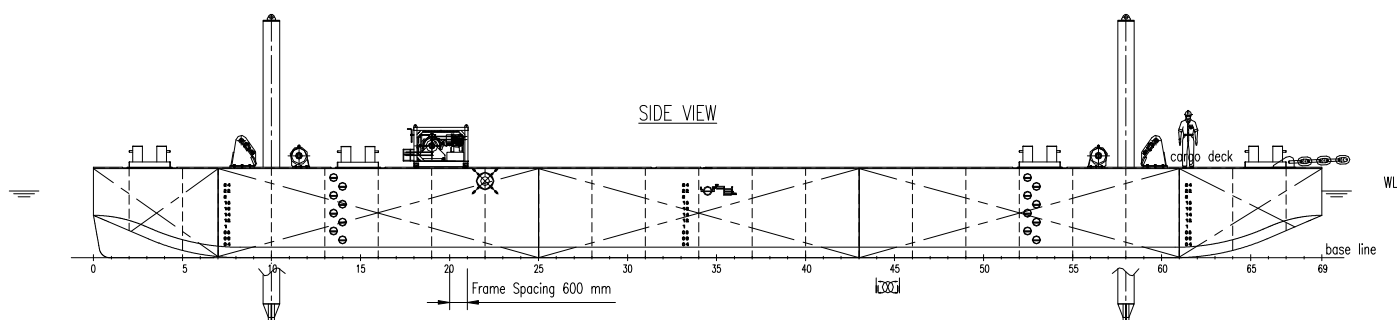
SB



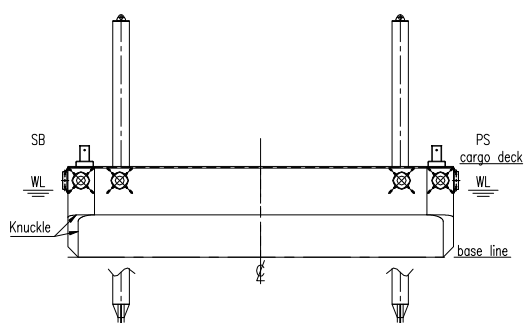
SIDE VIEW

WL

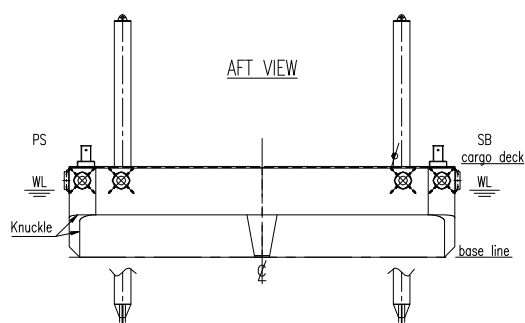
base line



FRONT VIEW



AFT VIEW



DAMEN STAN PONTON® 4113

"RHUMB 4113"

DAMEN

DAMEN SHIPYARDS GORINCHEM

Member of the DAMEN SHIPYARDS GROUP



Industrieterrein Avelingen West 20
4202 MS Gorinchem

P.O. Box 1
4200 AA Gorinchem
The Netherlands

phone +31 (0)183 63 99 11
fax +31 (0)183 63 21 89

info@damen.nl
www.damen.nl